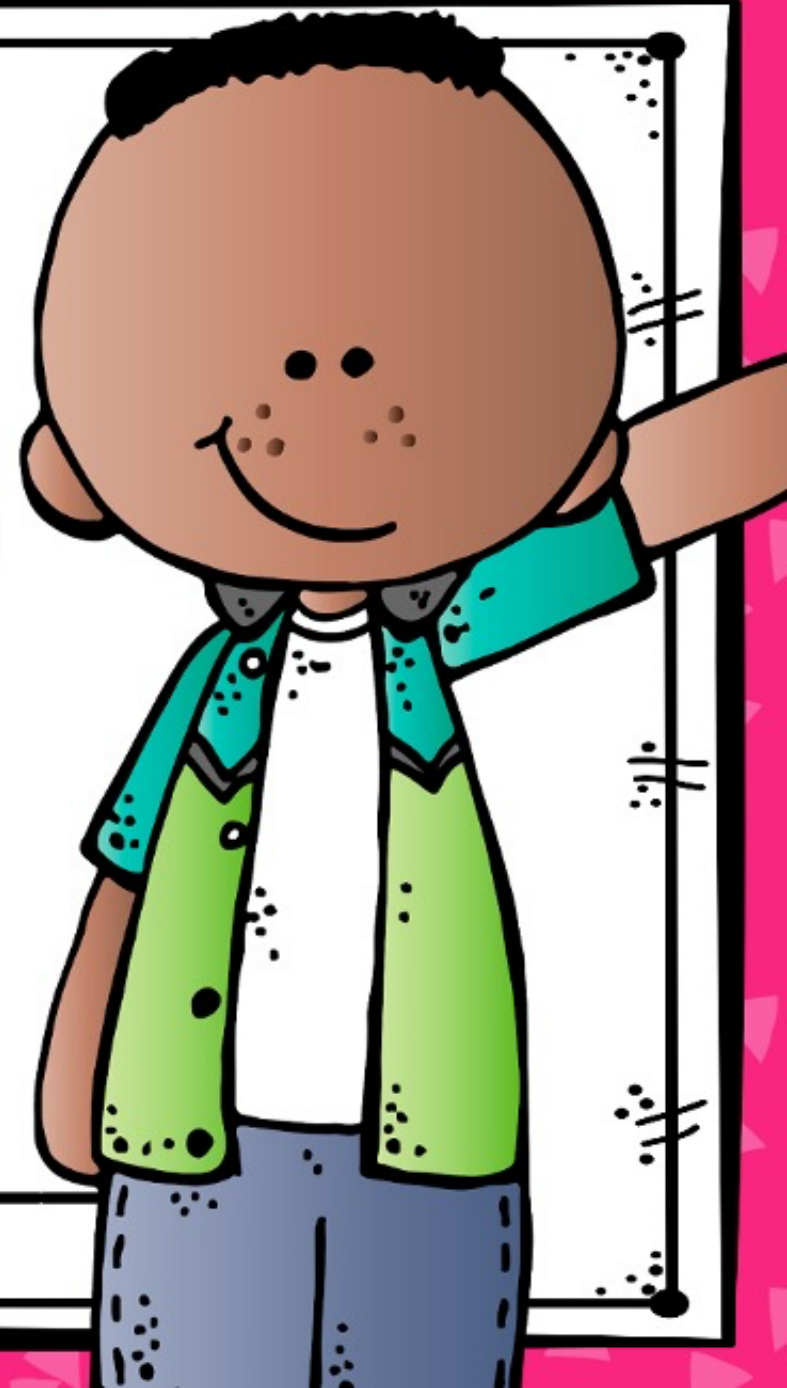


Third Grade
TEST PREP
math centers

Name: Type



Student DIRECTIONS

Read the directions at the top of each center to learn what to do.
Most centers will have you do one of two things:

TYPING CENTERS

Boxes like this: # are where you should type just a number as your answer.

Boxes like this: Type are where you should type numbers, words, and/or equations for your answer.

DRAG AND DROP CENTERS

Some centers have objects like these:



You will need to click and drag them to where they belong.

SPECIAL CENTERS → → →

Sometimes, you will need to do more than type or drag and drop to complete a center. These special centers will have tips from the characters to help you. Scroll to the side of this slide to find one!



Notes to the TEACHER

There are several ways you can use these math centers in and out of the classroom!

They can be used as an independent math practice for your students. Students can complete them on in class devices while you're working with guided math groups. These digital math centers can also be used as an option for bell work if your students have 1:1 ratio with devices. They would work well as a warm-up before starting math instruction.

This resource is also a great solution for distance learning. Students can work on the math centers through out the week. All centers include student friendly directions for students to be able to navigate through the centers independently.

In most of the centers students are asked to fill in blanks or drag and drop items to solve problems. If there are special directions to follow, there are tips given by the clipart characters that explain and give examples of what to do.

I allow my students to complete the centers in any order that they wish. They love having some choice during centers.

The following pages have some frequently asked questions about using these digital centers files in Google Classroom.

3

ROLL A PROBLEM

Roll 3 dice or click the button to roll. Follow the steps in order to complete each problem.



Click to roll

Roll 3 dice. List the numbers you rolled:

#

STEP 1:

Using all three digits, make the largest value number you can make and then make the lowest value number.

Largest

Lowest

STEP 2:

Add the two numbers that you made and record the sum.

Type

STEP 3:

Subtract the smaller number from the larger number. Record the difference.

Type

Roll 3 dice. List the numbers you rolled:

#

STEP 1:

Using all three digits, make the largest value number you can make and then make the lowest value number.

Largest

Lowest

STEP 2:

Add the two numbers that you made and record the sum.

Type

STEP 3:

Subtract the smaller number from the larger number. Record the difference.

Type

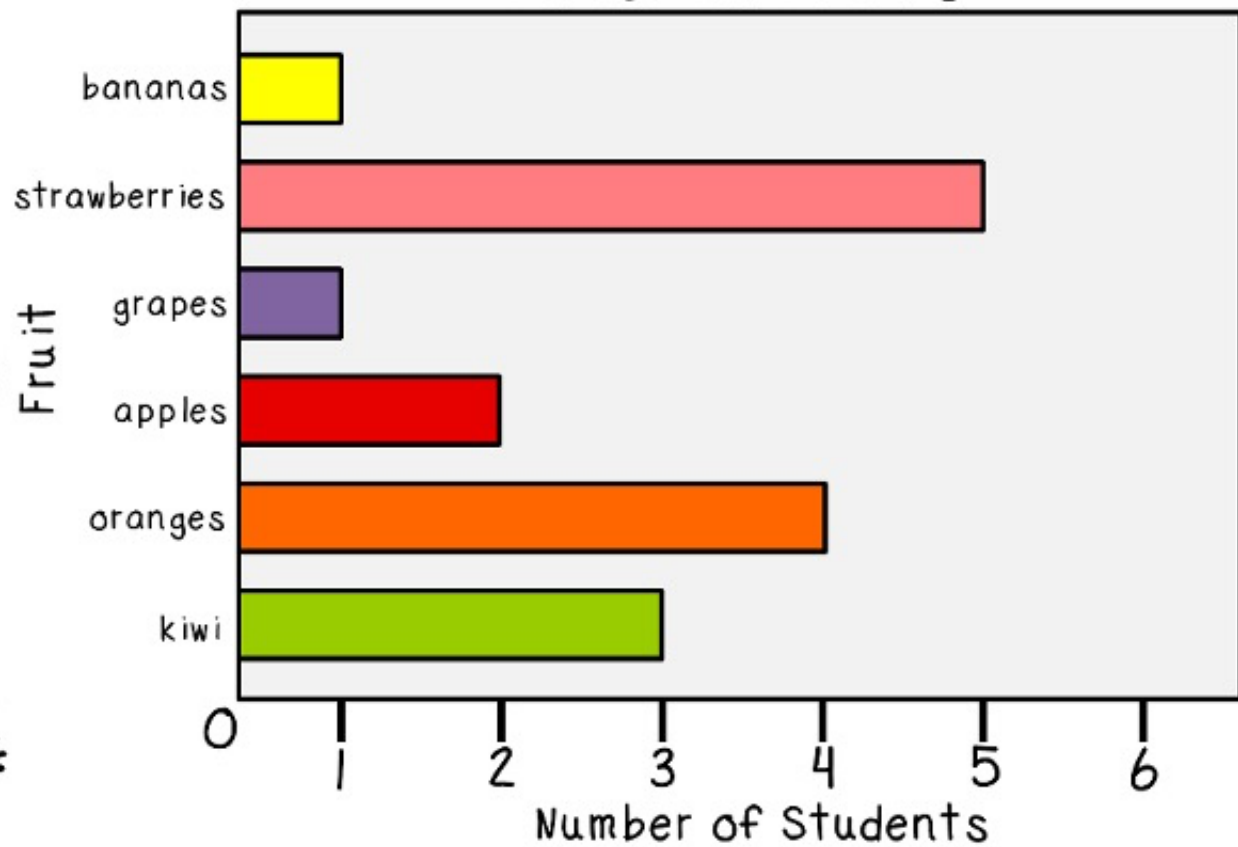


6

READ A GRAPH

Use the bar graph and pictograph to answer the questions.

Favorite Fruits



1. How many students chose apples as their favorite fruit?

Type

2. How many more students chose strawberries than oranges as their favorite fruit?

Type

3. How many students did not choose kiwi or strawberries as their favorite?

Type

4. How many students chose either grapes or bananas as their favorite fruit?

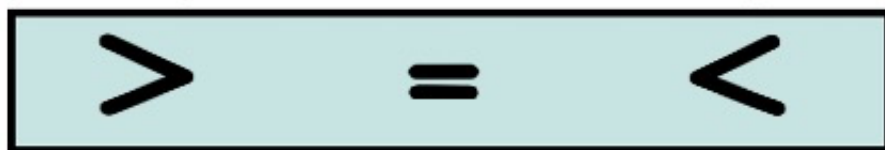
Type



10

FRACTIONS

Drag the correct comparison symbol or fill in the missing number make each equation true.



A. $\frac{1}{2} \bigcirc \frac{1}{6}$

B. $\frac{2}{4} \bigcirc \frac{2}{3}$

C. $\frac{4}{6} \bigcirc \frac{2}{3}$

D. $\frac{2}{5} \bigcirc \frac{4}{5}$

E. $\frac{1}{2} = \frac{\#}{6}$

F. $\frac{2}{4} = \frac{\#}{8}$

G. $\frac{2}{3} = \frac{4}{\#}$

H. $\frac{2}{2} = \frac{4}{\#}$

